

RDT Series

RDT Series

The RDT series is a multi-functional Touch system specifically for retail & hospitality application such as hotels, restaurants and shops.

- ❑ Compact All-in-one M/B design with Rich I/O especially for POS Terminal
- ❑ Space saving and Silent Stand Alone All-in-one POS Terminal
- ❑ Pentium Celeron Mobile High Performance Platform
- ❑ Good Flexibility Design suitable for various applications
- ❑ 15" LCD available with 5-wired resistive, Capacitive, SAW and IR touch panel technology
- ❑ Extremely Solid and Reliable structure
- ❑ Water spill resist
- ❑ Power Switch and LCD Brightness Control Panel on the bottom
- ❑ Hidden Connector and Power Cable Design
- ❑ Optional CF Socket functionality for thin client application



Tilt Angle 0°~ 90°: Adapt to operation in any environment



Triple Track Magnetic Stripe Reader for membership management or operator identification



Removable Base and Wall Mounting capability with 75mm VSEA holes



Second Display can be integrated to the back side of the system.



Customer Display VFD type (2X20)
VFD Customer Display can be integrated to the back side of the system

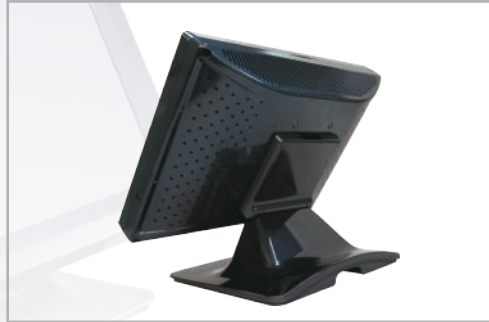


Easily arrange the cables inside the stand.



RDT Series

The Best Touch Solution



Specification		MODEL	RDT-150
Motherboard	CPU Type	Intel Atom 1.6GHz (N230) CPU	Intel Celeron M CPU / Intel Core 2 Duo M CPU
	System Freq.	533MHz	533 / 800MHz
	Chipset	Intel 945GC+ICH7	Intel 960GLE (965GME) + ICH8M
	Memory	One DDRII DIMM socket (240PIN DDRII 533/667 up to 2GB)	One DDRII SO-DIMM socket (200PIN DDRII 533/667 up to 4GB)
	Video	Integrated Graphic Engine	
	Ethernet	10/100Mbps LAN Subsystem	10/100/1000Mbps LAN
	Audio	Realtek ALC 662 audio	
Storage Device		2.5" IDE or SATA HDD x 1	2.5" IDE or SATA HDD x 1 Compact Flash II Socket x 1
I/O Connector		Serial Port x 1+ 2(Optional) Parallel Port x 1 USB 2.0 Port x 4 External +4 Internal PS/2 Mini-DIN Keyboard Port x 1 PS/2 Mini-DIN Mouse Port x 1 RJ-45 Ethernet Port x 1 Audio Line-out Port x 1 & Mic-in Port x 1	Serial Port x 4 External +2 Internal Parallel Port x 1 USB 2.0 Port x 4 External +4 Internal PS/2 Mini-DIN Keyboard Port x 1 PS/2 Mini-DIN Mouse Port x 1 RJ-45 Ethernet Port x 1 RJ-12 Cash Drawer Port x 2 VGA Port x 1 (for second screen) Audio Line-out Port x 1 & Mic-in Port x 1
Expansion Slot		PCI Slot x 1	Mini PCI Slot x 1
Monitor		15" XGA TFT LCD	
Touch Screen		5-wire Resistive Touch Panel (Optional: Capacitive, SAW and IR touch panel)	
Power Supply		External Power adapter inside the stand	
Dimension (mm)		380(W)x217(D)x311(H)	
Optional Integrated Device		VFD Customer Display, MSR Card Reader, Fingerprint Scanner 3-in-1 MSR+Smartcard+i-Button Reader Second LCD Screen with or without Touch Screen	