



## RealPOS™ 70

Point-of-Sale terminal

- Enhanced serviceability maximizes availability
- Powered USB 2.0 and serial ports eliminate power bricks
- Full multi-media enables POS, kiosk and training device all in one
- Embedded ATX extends lifecycle
- Metal construction enhances durability
- Easily integrated upgrade modules protect your investment

### A New Standard in POS for Retail

NCR understands retail and the challenges of handling volume transactions in hospitality businesses. To meet these challenges, NCR have leveraged more than 100 years of POS experience into developing the new NCR RealPOS 70. With simple service access for greater availability, industry leading upgradeability to protect your investment and flexible configuration options to meet your individual needs, the NCR RealPOS 70 defines a new standard for point-of-sale technology and investment value.

#### Keep Your System Up and Running

The internal design of the NCR RealPOS 70 makes components easily accessible and serviceable, allowing changes to be made quickly on location. The placement of components on user-friendly "sleds" enables them to be swapped easily whether it is the operator displays, motherboards, hard drives or power supplies. Components can be swapped in minutes, reducing downtime and providing superior terminal availability.

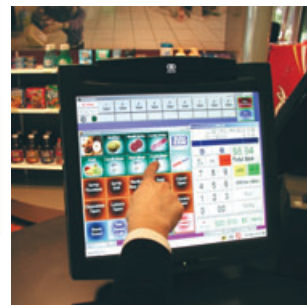
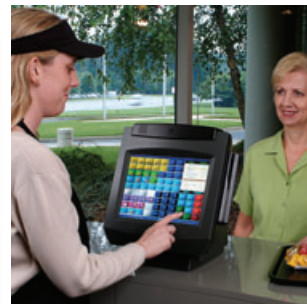
#### Tailored to Your Needs

Delivering a variety of configuration options, the NCR RealPOS 70 offers a flexible input/output interface with both powered USB 2.0 ports and legacy serial connections that support a wide range of traditional peripherals. In addition, emerging technologies like fingerprint recognition and wireless communications are also supported. Stereo speakers and multi-media capability enable the terminal to serve as a POS, kiosk or interactive training device. At home in the most demanding hospitality environments, the NCR RealPOS 70 offers several mounting options, supports 12.1", 15" or 17" LCD displays and is made of rugged cast aluminum.

#### Protect Your Investment

With a flexible, industry-standard computing architecture that ensures a lower total cost of ownership, the NCR RealPOS 70 was developed specifically for extended life cycles. This kind of solution stability means you will only be investing in upgrades that contribute to your bottom line. Whether it's a move from serial to powered USB, or an upgrade from 12.1" or 15" to 17" display, the easily integrated upgrade modules of the NCR RealPOS 70 provide a clear migration path and offer maximum investment protection.

**Maxatec**  
pos terminals



# RealPOS™ 70

Technical Specifications	
Processor	Intel® 2 Ghz Celeron® Processor, Embedded ATX Mother Board
System Memory	128MB - 2GB DDR memory, 2 DIMM Sockets
Video Memory	8MB - 64MB, Shared with System Memory
Connectivity	
Standard	3 powered RS-232 Ports (12V) 2 Optional RS-232 Ports (None powered) Parallel Port PS/2 keyboard and mouse ports 5 USB 2.0 ports (1-24V, 2-12V, 2-5V) Cash Drawer Kickout Headphone Port Microphone Port DVI - I (Digital Visual Interface) VGA (Analogue CRT/LCD) 10/100 Ethernet LAN
Expansion	PCMCIA for wireless 256MB Compact Flash Memory Hard Disk Drive Flex Disk Drive (External) CD/DVD ROM Drive (External)
General	
Operating Systems	MSDOS 6.22 Windows® NT Windows® 2000 Professional Windows® XP Embedded Windows XP Professional Certified Linux Certified
Terminal Dimensions (with MSR)	35cm (13.8") x 27.2cm (10.7") x 39.4cm (15.5") (w x d x h)
Peripheral Options	Integrated 12.1", 15" or 17" LCD (clear, bright LCD with dual bulb technology and rated at 350 NITS)
	Capacitive Touch Screen technology
	Integrated 2x20 Customer Display
	Integrated All Points-Addressable Customer Display
	Integrated MSR (3 track ISO or JIS)
	Integrated Peripheral Tray
	Fingerprint Recognition
	Remote 2x20 VFD Customer Display
	Remote 2x20 Highbright LCD Customer Display

Printers	
7167	Multi-function thermal receipt/slip printer
7197	Thermal receipt printer
Retail Keyboards	
5932	Alphanumeric 'big ticket' keyboard
5932	64-key POS keyboard
Cash Drawers	
2189	Full-size
2183	Mid-range

All manufacturers trademarks acknowledged. Specifications subject to change without notice. Issue 1 - 2006

